

ALERT! Huge Army Corps of Engineers (USACE) Project Coming further up American River (east of Watt) for “potential erosion”

The Beauty... Wild & Scenic American River.

...Larchmont area looking all the way to Watt Ave.



All trees visible on the left bank are slated for bulldozing...

Please Help save the **next 500 trees** in danger: AmericanRiverTrees.org



The Peril..... “Bank erosion” work is coming (like this work near Sac State) (view Oct. 2023)

“Launchable rock toe” (near Sac State)



...just like this “erosion” project already done near Howe/Sac State

These **same** methods are coming upriver – from Watt Ave. to Mayhew, **unless we speak out!**

“Launchable rock toe” in progress near Howe/Sac State – Existing Projects



(Sept. 2023)

(Oct. 2023)



Same methods are coming upriver – from Watt Ave to Mayhew, unless we speak out!

Do these current methods truly improve “bank erosion” for the next decade?

Howe Ave. Bridge (Oct. 2023)



...or do they make us **less safe?**

These **same** methods are coming upriver – from Watt Ave. to Mayhew, **unless we speak out!**

A “finished” project ready for planting – further downstream from Sac State (Sept. 2023)

There has to be a better way!



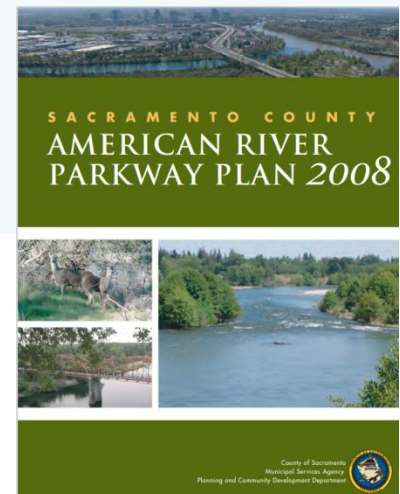
New projects for “erosion” potential, -- not direct “flood control” measures.

The new projects (at east end of “3B” site 4-1) are for “potential erosion”, and are being applied *everywhere* there was no prior “revetment”.

- Overgeneralized “potential erosion” concern
- (No additional *levee* work/upgrades for east end of *3B-south*, site 4-1).
- The miles east (upstream) of Watt Ave. are sensitive riparian areas, designated “**Protected Areas**” in the **American River Parkway Plan**.
- This is a **Wild & Scenic River** for its outstanding recreation values.

5 million visits to the American River Parkway annually (more than Yosemite)!

The wildlife corridor and densely wooded banks are vital to the American River Parkway’s amazing vistas and wildlife.

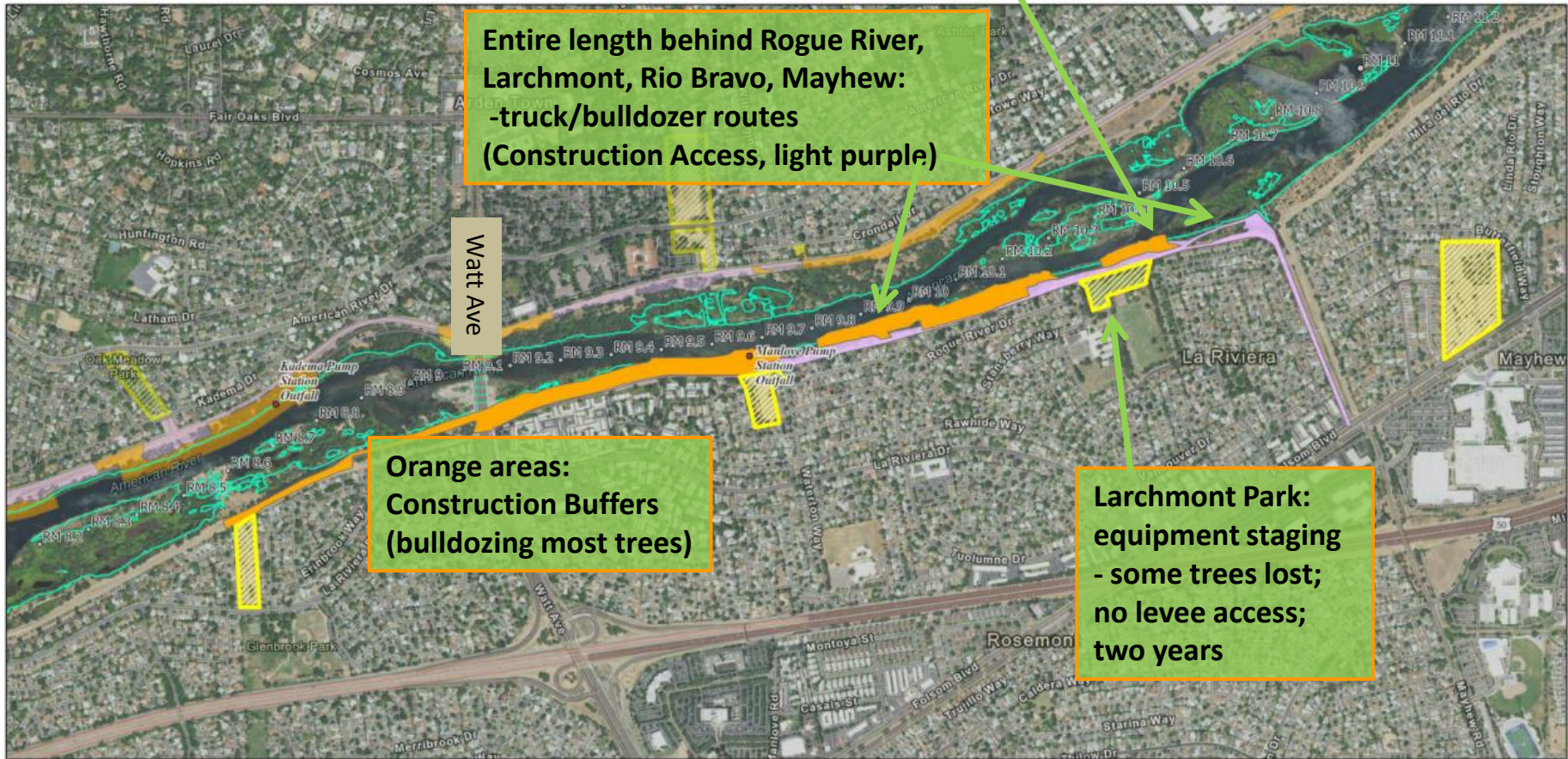


How Can You Help Revise Contract“3B”?

- The Lower American is a **Wild and Scenic River**. **Sacramento Regional Parks** and the **National Park Service (NPS)** determine *conditions for consistency* with Wild & Scenic Rivers Act.
 - National Park Service encourages “bio”engineering methods (e.g., stabilization by vegetation)
 - **Sacramento Regional Parks must initiate comments/conditions. Let them hear from you!**
- **Write to Army Corps (USACE): Write comment email !** - by **Feb. 23.** Website has Samples*
Thank you for great turnout at virtual public sessions: Jan. 10 and 16!
- **Insist** they demonstrate **spot-by-spot** need/benefit, and evaluate **alternative methods** that are **targeted and less destructive** to habitat and wildlife.
 - Unjustified massive damage. This is a straight stretch of river. Modeling shows low bank velocities here.
 - Must consider “spot fixes”, small equipment, maintenance, use of stabilizing vegetation. (National Park Service encourages stabilization by natural vegetation).
- Let’s insist on ways to have **trees AND flood protection.**
- The **Jewel of Sacramento** deserves our utmost care! **THANK YOU !**
- *** Click-to-send emails:** Visit: <https://americanrivertrees.org> for actions to help save the trees and riverbank!

USACE 3B south (4-1) footprint*

250 year old Heritage Oak on Access Ramp – not marked as Saveable



Entire length behind Rogue River, Larchmont, Rio Bravo, Mayhew:
-truck/bulldozer routes
(Construction Access, light purple)

Orange areas:
Construction Buffers
(bulldozing most trees)

Larchmont Park:
equipment staging
- some trees lost;
no levee access;
two years



American River Erosion Contract 3B South Site 4-1 Project Footprint

Project Impact

- OHWM
- Staging
- Construction Buffer
- Construction Access
- RM tenths
- Outfall

Updated 12/7/2023

0 0.2 0.4 Miles



US Army Corps of Engineers
Sacramento District

Figure 3.5.2-10. American River Erosion Contract 3B South Site 4-1 Footprint

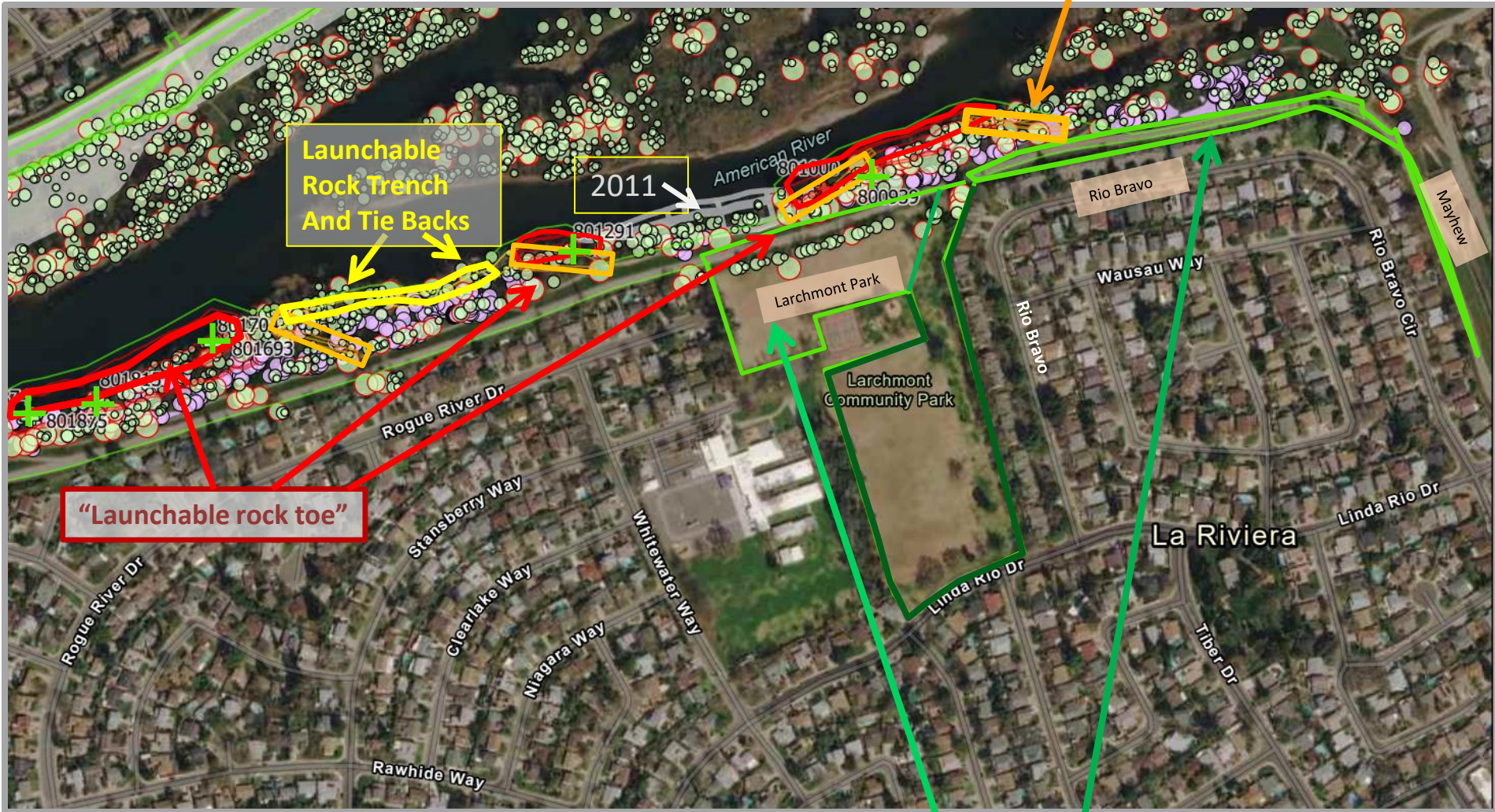
*From Army Corps new draft SEIS/SEIR, p.3-37, with additional local information noted

Army Corps Tree Inventory - draft "3B" Areas Near Rio Bravo, Larchmont, Rogue River

(3B-south, site 4-1)

(Adapted from draft maps courtesy of USACE Sept 2023)

250 year old Heritage Oak on Access Ramp – not marked as Saveable ?



Ramps	Construction limit	Tree Size, DBH	≤32"	Saveable Trees
Reventment and launchable toe	Elderberries	≤10"	≤60"	
Rock trench		≤18"	≤670"	
				No Unknown Yes

-Green lines: Access, Staging
 -(Faint) Yellow Line: Rock Trench
 -Red lines: Launchable toe (like Howe)
 -Orange rectangles: draft Access Ramps

View of Army Corps (USACE) Website

The screenshot shows the USACE Sacramento District website. The browser address bar displays <https://www.spk.usace.army.mil/Missions/Civil-Works/Sacramento-Levee-Upgrades/>. The navigation menu includes: About, Business With Us, Missions, Locations, Careers, Media, Library, Contact, and Coronavirus. A search bar is located in the top right corner.

On the left sidebar, there are several sections: "Sacramento Weir", "Mitigation", "Subscribe for Construction & Traffic email updates" (with a bulldozer icon), "Project Information Tri-fold" (with a document icon), and "Construction Work Inquiry & Concern Submission Form" (with a speech bubble icon). Below these is a section for "Sacramento Levee Upgrades Aerials (SREL C3)".

The main content area features a section titled "Current Project Activities". Under this section, the link "American River Common Features (ARCF) SEIS/SEIR" is circled in yellow. Below this link, the text states: "USACE has prepared a Draft Supplemental Environmental Impact Statement/Subsequent Environmental Impact Report (SEIS/SEIR) to address design refinements made to the 2016 ARCF Final EIS/EIR. Refinements include changes to designs associated with the Magpie Creek Project, American River Erosion Contract 3B, 4A, and 4B, Sacramento River Erosion Contract 3, American River Mitigation Site, Sacramento River Mitigation Site, and installation of a Piezometer Network."

Below this text is a sub-section titled "American River Common Features (ARCF) 2016 Draft SEIS-SEIR - December 2023". It contains the following information: "*THE PUBLIC COMMENT PERIOD HAS BEEN EXTENDED. Public comments will now be accepted until February 23, 2024 and can be submitted to ARCF_SEIS@usace.army.mil and PublicCommentARCF16@water.ca.gov".

Further down, it provides links: "The Public Draft SEIS/SEIR is available here: - [Draft SEIS-SEIR Report](#)" and "The Public Draft SEIS/SEIR Appendices are available here: - [Draft SEIS-SEIR Appendices](#)".

At the bottom of this section, it states: "A hard copy of the Draft SEIS/SEIR is available for review at: Sacramento Public Library, 828 I Street, Sacramento, CA 95814".

At the very bottom of the main content area, it says: "Answers to Frequently Asked Questions can be found here: [FAQ](#)".

Two yellow callout boxes with arrows point to specific elements: one points to the circled "American River Common Features (ARCF) SEIS/SEIR" link, and the other points to the email addresses in the "American River Common Features (ARCF) 2016 Draft SEIS-SEIR - December 2023" section.

-SEIS/SEIR for Contract 3B is linked there; and where to submit comments.

-Email your comments to BOTH email addresses (covers federal and state lead agencies).