

COMING SOON TO OUR NEIGHBORHOOD!

DESTRUCTION OF THE AMERICAN RIVER PARKWAY FROM UPCOMING CONSTRUCTION PROJECT

What is Planned (by U.S. Army Corps of Engineers):

The upcoming plans include work like the photos below:

- Between the Howe Avenue bridge and Watt Ave bridge
- Continuing a mile upstream from the Watt Avenue bridge to the vicinity of Mayhew/Rio Bravo Circle on the South bank (C-3B-south) and Estates Drive on the North bank (C-3B-north).
- Access ramps and truck routes behind Rio Bravo and Rogue River; equipment staging in Larchmont Park.

What Can I Do to Stop or Alter the Plan?

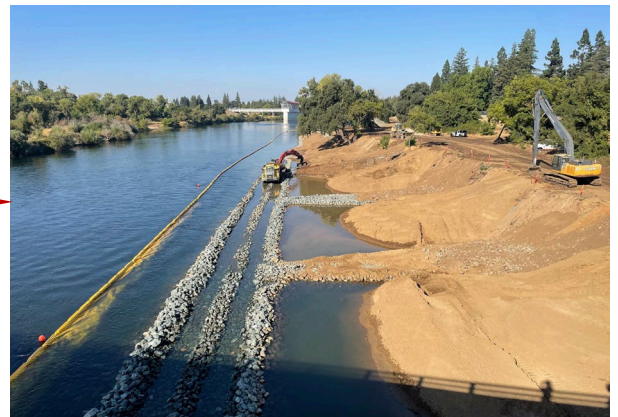
- Thank you for writing comments—we are being heard!
- Army Corps is reviewing nearly 900 comment letters!
- **No decision has been made. Forward your comments to additional representatives & leaders. Spread the word!**
- Let's keep raising awareness in preparation for next steps.
- **Visit AmericanRiverTrees.org** -- Take action! Sign up for alerts, events, and to volunteer (pop-ups, outreach, etc.)

**600+ trees
(incl. heritage
oaks), wildlife
habitat, and
recreational
access are
AT RISK!**

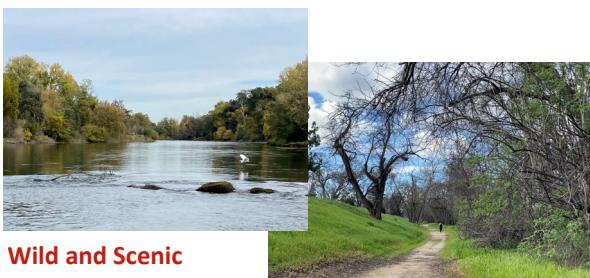
**TAKE ACTION
to help protect
our beautiful
Wild and Scenic
River!**



Post-construction
erosion damage
near Sac State



Photos: bank erosion project
near Sac State



Wild and Scenic

